



Sixth Form Prospectus 2019

Weatherhead
High School

A high performing academy providing excellence for all





Contents

- 1 Welcome to Weatherhead Sixth Form
- 2 Introducing Sixth Form
- 3 Why Choose Weatherhead Sixth Form?
- 4 Success Beyond Weatherhead Sixth Form
- 5 Post 16 Courses at Weatherhead
- 6 Pathways to your Future in Weatherhead
- 7 The Scholars' Programme
- 8 Leadership at Weatherhead
- 9 Enriching Sixth Form Life
- 10 Well-being and Socialising in Sixth Form
- 11 Entry Requirements
- 12 Applying to Weatherhead
- 13 Expectations and Student Agreement
- 14 Future Choices
- 15 Frequently Asked Questions
- 16 Easy access Wirral - wide to Weatherhead
- 17 Welcome to the Sixth Form Course Guide

Welcome to Weatherhead Sixth Form



“*Outstanding leadership
from everyone is at the
very heart of this school's
success. **Ofsted***”

I am delighted to present this Sixth Form Prospectus which hopefully will give you insight into the courses and wonderful opportunities available at Weatherhead Sixth Form.

Weatherhead Sixth Form is one of the largest and most successful in the North West and our students secure places at top universities throughout the country.

Excellence in teaching and support helps all students to succeed and meet their aspirations.

The Sixth Form is a happy, vibrant place where students enjoy working hard, but also get involved in all types of different activities which develop them as people and prepare them for their future.

I am very proud of our Sixth Form students and really do believe the teaching, care, guidance and support they receive gives them something very special.

Enjoy reading this prospectus and do come and see what we can offer.

A handwritten signature in black ink, which appears to read 'A. Whelan'.

Miss. A. Whelan
Headteacher

Introducing Sixth Form



Left to right:

Mrs Ellis - Sixth Form Pastoral & Academic Support Worker

Mrs Lambert - Learning Support Co-ordinator

Mr Reid - Year Leader

Miss Byrne - Director of Sixth Form

Mrs Crichton - Year Leader

Miss Hodgson - Sixth Form Administration Officer

Weatherhead Sixth Form is a community of over 350 students studying a combination of over 36 courses, both academic and vocational. The Sixth Form Team looks forward to assisting you with your course choices and welcoming you into Sixth Form in September 2019.

The Sixth Form offers you:

- A curriculum that is created around your option choices
- A wide range of academic and vocational courses, which will provide successful routes into university, college or employment
- High quality teaching provided by a team of expert Key Stage 5 teachers who are committed to your success
- A-Level grades 74% A*-C, 40% A*-B, BTEC 100% pass rate and Dist* - Dist 55%, Dist*- Merit 97%, Tech Level 100% pass rate, 50% A*-A and 100% A*-B
- Outstanding pastoral support – a team of dedicated form tutors and specialist Sixth Form staff ensure that every student has the opportunity to achieve their full potential
- Specialist advice on higher education, further education and employment
- Continued personal development through a variety of enrichment and leadership opportunities
- A Scholars' Programme to prepare our most able students for the top universities
- Voluntary work placements within the local community with a view to continued personal development

Why choose Weatherhead Sixth Form?

At Weatherhead our core values centre on providing outstanding levels of teaching, learning and pastoral support. Our students are unique individuals and we provide opportunities for all students to achieve in a positive, inclusive and supportive environment.

State of the art facilities and resources are available to students to enhance educational development.

These include:

- Internet access for all students and staff
- Laptops for Sixth Form use
- Sixth Form ICT suite
- Sixth Form Learning Resource Centre
- Dedicated mezzanine level
- Two Sixth Form common rooms with wi-fi access
- High quality reference materials in each subject
- Laser and colour printers, scanners and digital cameras
- Video conferencing facilities and interactive classroom facilities
- State of the art theatre with high specification sound and lighting and theatre seating for 500
- Music suite with excellent facilities
- Modern science laboratories with expert technical support
- Media and Film Studies centre with editing suite
- Purpose built ICT and Business suite
- Fully equipped fitness suite with free access for Sixth Form students
- Superb catering facilities available at break and lunch time



Success Beyond Weatherhead Sixth Form

Weatherhead takes pride in all our students' progression routes. Last year over 120 students headed to university, many at Russell Group institutions. For many, they were the first generation in their families to study at university. A sample of destinations includes:

Student	Grades	Subjects	University	Course
Scott	A* A A	Physics, Chemistry, Maths	University of Lancaster	Physics
Jessica	A* A B	English Literature, English Language, Media Studies	University of Nottingham	English Language and Literature
Scott	A* A B	English Literature, Media Studies, History	University of Sheffield	History
Samantha	A* A C	Fine Art, DT Product Design, Film Studies	Liverpool John Moores	Graphic Design and Illustration
Tallulah	A* A C	English Literature, History, Biology	University of York	English/History (Equal)
Emma	A* B B	Physical Education, Biology, Geography	Edge Hill	Sport & Exercise Science
Rhianne	A* B B	Sociology, English Literature, Geography	University of Leeds	Criminal Justice and Criminology
Tiana	A* B C	Sociology, Psychology, Applied Science	University of Liverpool	Law
Lydia	A* B C	Fine Art, English Literature, History	Sheffield Hallam	Illustration
Erin	A* B C	Textiles, Applied Science, History	Nottingham Trent	Costume Design and Making
Georgia	A* C C	Dance, Biology, Psychology	Chester	Dance
Danielle	A A A	Diploma in Child care and Education	Employment	
Bethany	A A A	Diploma in Child care and Education	Employment	
Christopher	A A B	History, Media Studies, English Literature	University of Sheffield	History
Melissa	A A B	Biology, Geography, Chemistry	University of York	Biology
Poppy-Leigh	A A C	DT Product Design, Maths, Physics	Gap Year	
Erin	A A C	Maths, Further Maths, Spanish	University of Liverpool	Mathematics
Poppy	A A C	English Literature, Geography, Maths	University of Sheffield	Geography
Sandra	A* A Dist*	Textiles, Fine Art, BTEC Photography	Gap Year	

Students have also gone directly into employment and apprenticeships in a range of areas including: childcare, banking, insurance, paramedic training, flight training, community work, and the travel industry.

Post 16 Courses at Weatherhead

We construct the timetable around Year 11 option choices ensuring that we create a bespoke curriculum for you. Please see the *Sixth Form Course Guide* in the back of this booklet for a full overview of the courses and requirements. Post 16 courses available are:

Level 3 Courses

- BTEC Applied Science
- Biology
- BTEC Business
- Chemistry
- Childcare and Education (NCFE CACHE Diploma)
- Computer Science
- Dance
- Drama and Theatre
- English Language
- English Literature
- Extended Project Qualification (EPQ)
- Film Studies
- Fine Art
- Geography
- BTEC Health & Social Care (Single)
- BTEC Health & Social Care (Double)
- History
- BTEC ICT
- Mathematics
- Further Mathematics
- BTEC Media
- MFL: French & Spanish
- MFL: German
- Music
- BTEC Music
- Philosophy, Ethics and Religion
- Photography
- Physical Education
- Physics
- Product Design
- Psychology
- Sociology
- BTEC Sport
- Textiles

Level 2 Vocational Courses

- Childcare and Education
- Bespoke Option

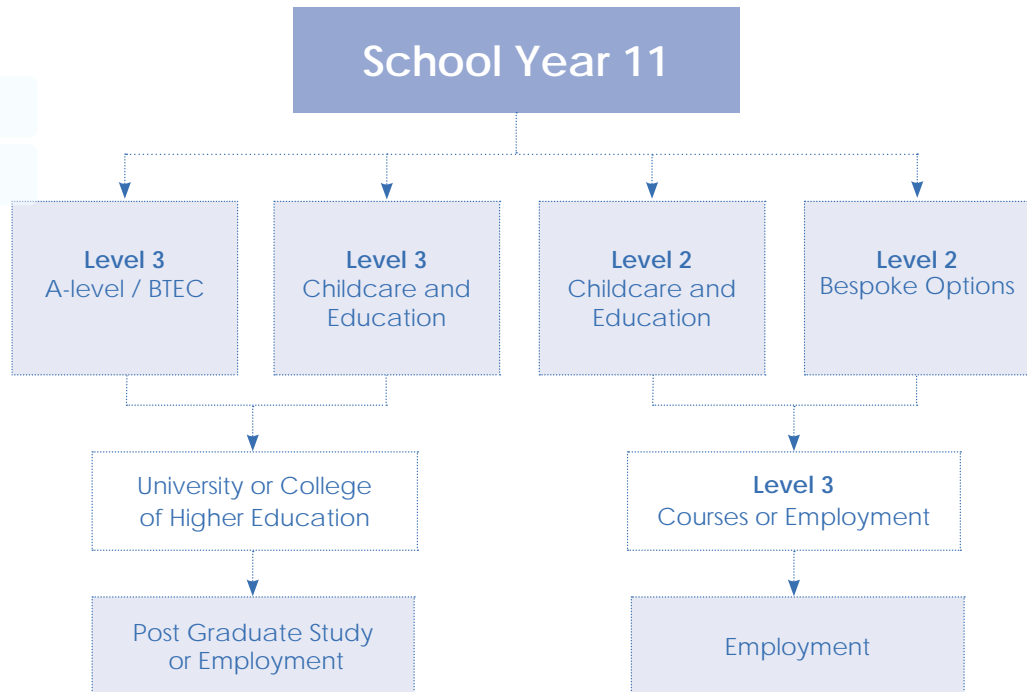


Weatherhead has great results, facilities and staff, and I know that they will get me into the best university for me.

Hannah, Year 12



Pathways to your Future in Weatherhead



The Scholars' Programme

The Scholars' Programme provides exceptional opportunities and guidance for our gifted and talented Sixth Form students. At Weatherhead we are committed to supporting our students in successfully applying to the most prestigious universities, including Oxford, Cambridge and the Russell Group. The Scholars' Programme aims to inspire our students to achieve their full potential and aspire to a bright future. This process includes personalised mentoring and tailored speakers and visits. In recent years we have incorporated numerous University trips and external speakers into the programme in order to widen our students' horizons. This saw monumental success last year with one student securing a place at Cambridge.

Benefits of the Scholars' Programme

- Personalised support
- 1:1 interviews
- Personalised advice on applications to Russell Group universities
- Mock Russell Groups interview
- External mentors and alumni networking
- University trips
- Residential to Oxbridge and Russell Group universities
- Extended Project Qualification (EPQ)
- Scholars' Breakfasts and debates
- Cambridge University link
- Scholars' bursary to support wider reading
- Access to professional work experience
- Wider reading and current affairs discussion groups.



Oxbridge Programme 2018/19

February	CUSU Shadowing Scheme
March	Oxbridge Student Conference / Roadshow Haydock Park Cambridge Subject Specific Study Days-fully subsidised
June	Oxford Open Day Visits
July	Cambridge Open Day Visits
August	Sutton Trust Summer School week long residential
September	Mock Oxbridge Interviews / Mentoring



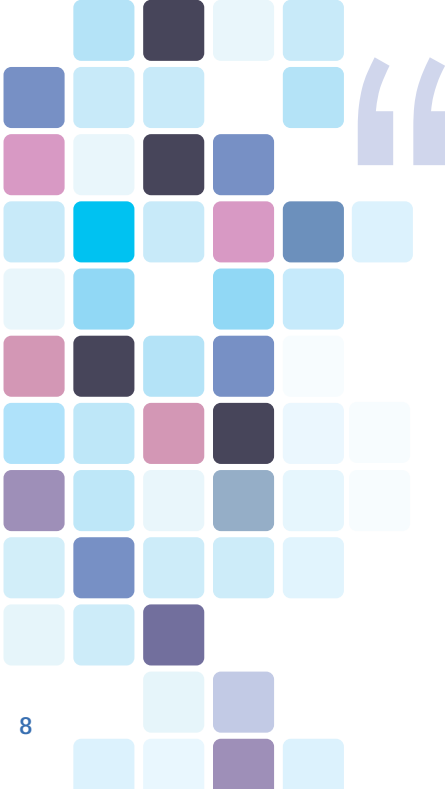
Leadership at Weatherhead

Weatherhead is a nationally recognised Leadership school. In 2015 we were awarded the accolade of National Sports Leadership Academy, presented at the House of Lords. The range of leadership opportunities on offer provides our students with confidence and prepares them to be future leaders, both at university and in their careers.



The following leadership opportunities are available:

- Student Senior Leadership Team (SSLT)
- Sixth Form Council
- Organising Committee
- Leadership Ambassador
- School Council
- Volunteers Programme
- Subject Ambassadors
- Subject Peer Mentoring
- Literacy Leaders
- Reading Buddies
- Numeracy Buddies
- Arts Ambassadors
- Arts Council
- Museum Guides: in association with Liverpool Museums
- Sports Council
- Level 2 Sports Leaders Award
- Dance Leaders
- Radio Leaders
- Sixth Form Friends
- Peer Mentoring
- Lunchtime Supervisors
- Community Arts Leaders



The leadership specialism is at the heart of the school - there is an excellent focus on developing students' personal skills and the leadership skills.

Ofsted



Enriching Sixth Form Life

There are many opportunities to enjoy activities beyond academic or vocational study and we encourage all students to participate in cultural visits. We have a partner school in Holland and organise an annual Sixth Form trip. We also offer cultural and subject focused trips to Venice, Berlin and Paris, as well as the World Challenge expedition to Malaysia and a ski trip.

The Duke of Edinburgh is available for students in Sixth Form wanting to develop leadership skills. Most Sixth Form students take part in Weatherhead Volunteers' Programme, volunteering at local care homes, charities and local schools in the community.

As part of the Weatherhead Volunteers' programme we welcome students taking the initiative in other community projects and charity fundraising, and have excellent links with external agencies for volunteer placements and work experience. We also encourage charity work with healthcare agencies, which is especially helpful to those students seeking routes into healthcare professions.

Through the programme opportunities are available with:

- Claire House Children's Hospice
- National Citizen Service (NCS)
- The Hive
- Sue Ryder
- Wallasey Lions Club
- Royal National Institute of Blind People (RNIB)
- Age UK
- Wirral Evolutions
- Autism Together
- Wirral Hospice St John's
- Charlotte's Brightside CLC
- Wirral Mencap
- Wirral Community NHS Foundation Trust



“

Younger students are pleased with the support offered by sixth form students who help them with literacy and numeracy. These sixth formers are excellent role models.

Ofsted

”



Well-being and Socialising in Sixth Form

“Life is not about waiting for the storm to pass, it’s about learning to dance in the rain.”

Vivian Greene



A happy, confident student will achieve more and become a successful individual. Alongside academic or vocational study, socialising and new friendships are a key part of Sixth Form life. Students who join us at Sixth Form all comment on the warm welcome and the ease with which they transition into Year 12.

Before starting Sixth Form in September 2019 you will have an opportunity to participate in taster, orientation and team building days. As a Weatherhead student you will have an opportunity to ‘sign up’ to a form group and, if you are new to Weatherhead, you will join a form with one of your friends.

At the end of your two years at Weatherhead, the highlight of the social calendar is the Sixth Form Prom; the Year 13 Prom Committee plans this with our Learning Support Coordinator. Recent successful proms have been held at the Liverpool Hilton Hotel, 30 James Street and The Shankley Hotel.



Well-being and Socialising activities include:

- Orientation Day in the summer term.
- Welcome breakfast ice breaker (for newcomers to Weatherhead)
- Team building activities
- Halloween fancy dress
- Pink Day charity fund raising
- Summer term reward trip
- Sixth Form Prom
- Termly social event
- Football
- Yoga
- Interform activities

Entry Requirements

At Weatherhead we pride ourselves on the excellent examination results achieved by all our students. We achieve this through supporting you through your curriculum choices and ensuring that you embark on the correct pathway for you.

We consider all applications carefully to ensure that we can offer you the right courses for success in your future. We welcome applications from all students and, although we do set entry criteria, we will also take your references into account.

We offer various routes across A-level, BTEC and Level 2 vocational courses, which are personalised to ensure the right route for you. Unlike many schools and colleges we create our timetable around what you want to study.

Level 3 (A-level / BTEC)

Students must have at least a grade 4 in Mathematics and English and at least 3 other GCSE (grades 4 or above) to access Level 3 Sixth Form provision.

Students with a grade 4 in Maths and/or English may have an individual consultation on suitable post 16 course choices with the Director of Sixth Form.

Level 2 Vocational

Childcare and Education
we expect a grade 3 or above

Bespoke options



If you have any questions about any aspect of what we offer at Weatherhead Sixth Form, please do not hesitate to get in touch with our Sixth Form Team on **0151 631 4401** or email: ask6f@weatherheadhigh.co.uk or sixthformapps@weatherheadhigh.co.uk

Applying to Weatherhead

How do I apply to the Sixth Form?

1. Look in the '**Sixth form Course Guide 2019**' in the back of this booklet for details of courses available and entry requirements for specific courses.
2. Choose the course that suits you and fill in the application form. If you have any queries speak to your form tutor, subject teacher or the Sixth Form team.
3. Your application form must be submitted by **Friday 21st December**.
4. If you are joining from another school and want further advice, please contact Sixth Form reception and a one to one appointment will be made with a member of the Sixth Form Team.
5. Attend Open Evening on **Thursday 15th November 2018, 6pm - 8pm** meet teachers and find out more about the range and combination of courses available.
6. If joining from another school, sign up for Taster Evening on **Tuesday 27th November 2018 from 4:15 pm - 6 pm**. Register online at www.weatherheadhigh.co.uk/sixthform



What happens next?

- All students who apply will be interviewed in **January 2019**. If you are successful, you will receive written confirmation of your place within 2 weeks of your interview.
- At interview we will discuss your choices and predicted grades. The interview is intended to ensure that you have made appropriate choices and are fully committed to joining our Sixth Form.
- You will need to bring your Year 11 report to the interview and external candidates will require references from your current school. After your examinations there will be further opportunities to discuss your choices and make final plans for your post 16 study.
- The process of creating the timetable begins in the spring term once applications have been submitted after **Friday 21st December**. We build the timetable around your option choices; however, not all students will be able to take all their preferred options. If there is a mismatch of more than one of your chosen subjects we will discuss this with you. If you change your mind about what you want to do then you must contact us as soon as possible.

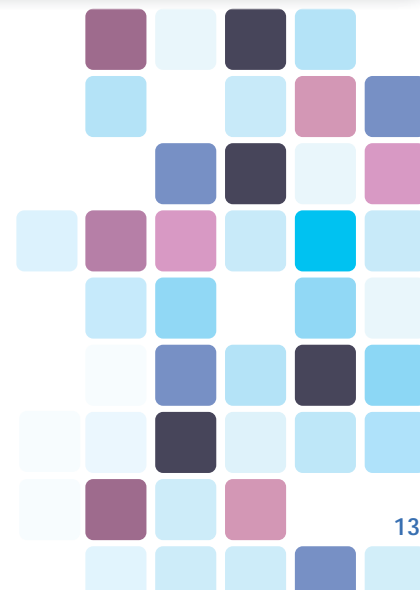
Expectations and Student Agreement

In Sixth Form you will be treated as a young adult and with this comes responsibility. You will make the transition into learning and teaching at Key Stage 5 where there is a focus on independent learning, organisational skills and wider reading in your chosen curriculum areas. As you enter Sixth Form you are beginning your preparation for study at university or the world of employment. A study skills transition programme enables you to meet the demands of post-16 study.

We set high standards for all students to ensure that you reach your full potential.

These standards involve:

- Excellent attendance and punctuality with compulsory attendance during form time
- Effective use of personal study, devoting 50 minutes outside the classroom for every 50 minutes spent in lessons (50-4-50 or approximately 5 hours per subject studied each week)
- Timetabled supervised study sessions
- Active citizenship and being a role model – as a Sixth Form student pupils in Year 7-11 look up to you and the influence that you set. You will have the opportunity to take on additional responsibility within the school community (opportunities are highlighted on Leadership at Weatherhead, page 8).
- Smart casual dress code is imperative in setting high standards. You are not allowed facial piercing, outrageous hair colours or visible tattoos.
- Part – time employment should be carefully managed during your studies in Sixth Form. A balanced approach is advised to ensure your continuing success.





Future Choices

Weatherhead enjoys excellent links with universities, professional bodies and industry. We have a specialist team offering career advice; students are advised on the best routes into higher education and careers, alongside opportunities that will benefit their chosen subjects and university applications.

“Students make outstanding progress, whatever their starting point or circumstances, and the standards they achieve are significantly above the national average

Ofsted

Activities and support includes:

Higher Education Preparation

- Personal statement and UCAS support session for students and parent
- Specialist database tool (Unifrog) a comparative tool for researching universities
- University trips and residentials
- Scholars' Programme
- Medlink and Vetlink
- Personal coaching and interview training

Careers Guidance

- Work experiences and placements
- Personal coaching and interview training, utilising our network of professionals through external networks and alumni programme
- Professional speaker programmes



Frequently Asked Questions

What if I cannot afford to stay on in post 16 education?

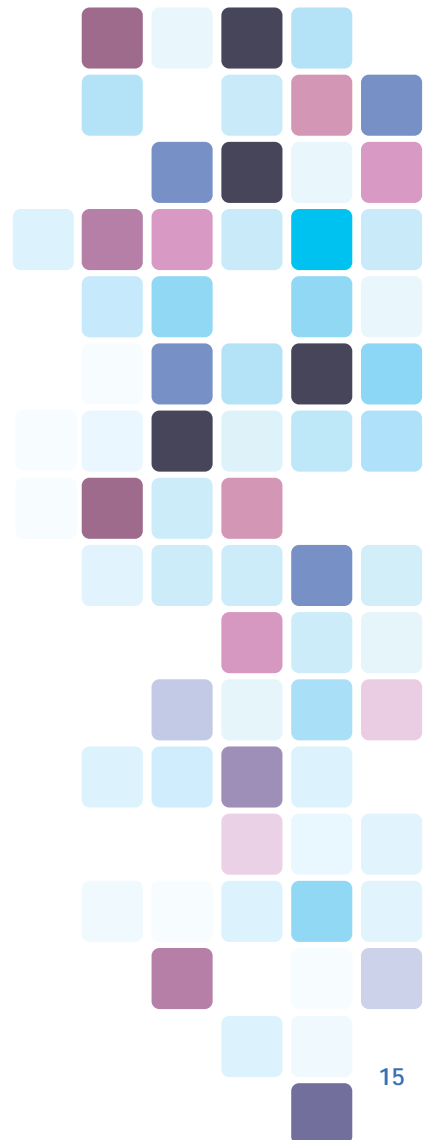
No one should feel unable to continue learning because of financial difficulty. We are able to offer a post 16 bursary grant to ensure that students are not disadvantaged in their achievement or preparation for university and employment. The bursary is there to help you with transport to school, equipment for learning and university/career requirements. Full details are available on our Sixth Form website or speak to the Sixth Form Team for more information.

What if my grades are not as high as I expected?

Do not worry. Contact the Sixth Form Team as soon as possible after you have received your results and we will arrange to meet with you again to discuss the options that are available to you.

What if I am not sure what subjects to choose?

Refer to our [Sixth Form Course Guide 2019](#) in the back of this booklet to help you identify the different choices available to you. Consider all the options and bring this document to your interview and we can shape the best course options together with you based on your responses.





Easy access Wirral-wide to Weatherhead

Weatherhead is easily accessible from most areas of the Wirral.

Special bus routes have been laid on by Weatherhead, in conjunction with Mersey Travel, to facilitate students getting to school.

If you have queries regarding transport to school, please feel free to discuss this with our Sixth Form Team as we are always open to reviewing transport arrangements to support students' needs.

Buses from Woodchurch / Prenton

Route: 413/414 (Arriva)

Prenton Singleton Avenue, Borough Road

Arrowe Park Hospital Arrowe Park Road, **Moreton Cross** Upton Road, Town Meadow Lane, Bermuda Road,

Moreton Cross Hoylake Road, Wallasey Village Merseyrail Station, **Liscard** Wallasey Road

Buses to Woodchurch / Prenton

Route: Upton 226 (Merseytravel bus operated by AL's coaches)

From Liscard Crescent via Mill Lane, St Albans Road, Wallasey Road, Breck Road, Poulton Bridge Road, Wallasey Bridge Road, Stanley Road, Tollemache Road, Upton, Road, Shrewsbury Road, Gerald Road, Talbot Road, Ingestre Road, Storeton Road, Woodchurch Road, Arrowe Park Road to Arrowe Park Hospital

Buses from Woodchurch / Prenton

Route: Prenton 227 (Woodchurch Road, opposite Sainsbury's)

Prenton via Woodchurch Road, Arrowe Park Road, Moreton Road, M53 Spur, M53 Motorway Junction 1, A5139, Poulton Bridge Road, **Breck Road (Weatherhead)**, to Liscard (Wallasey Road)

Morning: 07:43 Prenton - 08:04 Weatherhead

Afternoon: route: as above in reverse

Afternoon: 15:55 Weatherhead - 16:16 Prenton



Welcome to the Sixth Form Course Guide 2019



Course Guide Contents

19	BTEC Level 3 National in Applied Science	37	BTEC National in Information Technology
20	A-level Biology	38	A-level Mathematics
21	BTEC National in Business	39	A-level Further Mathematics
22	A-level Chemistry	40	BTEC National in Creative Digital Media Production
23	NCFE CACHE Technical Level 3 Diploma in Childcare and Education	41	A-level Modern Foreign Language: French and Spanish
24	A-level Computer Science	42	A-level Modern Foreign Language: German
25	A-level Dance	43	A-level Music
26	A-level Drama and Theatre	44	BTEC Level 3 National Extended Certificate in Music
27	A-level Design and Technology: Product Design	45	A-level Photography
28	A-level English Language	46	A-level Physical Education
29	A-level English Literature	47	A-level Physics
30	Extended Project Qualification (EPQ)	48	A-level Psychology
31	A-level Film Studies	49	A-level Religious Studies: Philosophy, Ethics and Religion
32	A-level Fine Art	50	A-level Sociology
33	A-level Geography (AQA)	51	BTEC Level 3 National Extended Certificate in Sport
34	BTEC Level 3 National Diploma in Health and Social Care (Double)	52	A-level Textiles
35	BTEC Level 3 National Extended Certificate in Health and Social Care (Single)		
36	A-level History		

BTEC Level 3 National in Applied Science

Description of Course:

The Applied Science course gives you the opportunity to actively experience Science through practical investigation, work experience, and contacts with local employers. This Extended Certificate qualification offers a fantastic opportunity for students looking for clear and direct routes into either higher education or employment within the field of Applied Science.

This course is also suitable for learners who are interested in learning about the Science sector alongside other fields of study, with a view to progressing to a wide range of higher education courses, not necessarily in Applied Science. Suitable to be taken as part of a programme of study that includes other appropriate BTEC Nationals or A-levels.

Assessment:

In total, 4 units of study are completed, with 3 mandatory units and 1 optional unit.

Externally Assessed

- **Principles and Applications of Science** - 90 minute written examination. The exam is split into three equal sections (Chemistry, Physics and Biology)
- **Science Investigation Skills** – Practical assessment. The assessment consists of 2 parts. In part 1 a practical experiment is completed under timed conditions. In part 2 a written task is completed based on the experimental findings.

Internally Assessed

- **Practical Scientific Procedures** – A series of work related tasks are completed which are tailored to current industry needs
- **1 optional unit** – A unit will be chosen from the following (Physiology of Human Body systems, Applications of Organic Chemistry, Astronomy and Space Science)

Why study at Weatherhead?

You will be taught by enthusiastic and dedicated staff who will work with you to ensure you achieve your best. Applied Science is a very popular course at Weatherhead, and has supported students to achieve excellent results and progress to higher education.

Course requirements:

You will need at least grades 44 in Double Science or Triple Science (GCSE Chemistry, GCSE Physics, and GCSE Biology) and a 4 in Mathematics at GCSE.

A-level Biology

Description of Course:

Biology at A-level is a demanding course which aims to develop knowledge and understanding of all life processes and provide a framework for further study and future employment. Underpinning A-level Biology is the consideration of 'How Science Works' which illustrates the relevance of Biology in Society and in the environment.

The course is structured to develop hands-on practical and data analysis skills coupled with further developing mathematical abilities. The course covers a diverse range of concepts including:

- Biological Molecules
- Cells
- How organisms exchange substances with their environment

- Genetic information
- Variation and relationships between organisms,
- Energy transfers in and between organisms,
- How organisms respond to changes in their internal and external environments
- Genetics
- Populations
- Evolution and ecosystems and Control of gene expression.

Assessment:

There will be three 2 hour papers

Paper 1: Year 12 content (35% of the A-level)

Paper 2: Year 13 content (35% of the A-level)

Paper 3: Year 12 and 13 content (30% of the A-level)

All papers will assess practical skills and data analysis. Paper 3 will require students to write an essay from a choice of two titles.

Why study at Weatherhead?

The Biology department will provide a friendly, supportive and purposeful atmosphere where you will know what is expected from you and how you can fulfil your potential. The department will help you to develop the independence that is needed to succeed in this discipline

Course requirements:

You will need at least a Higher Tier grade 6 in Biology or a Higher Tier grade 6 in a Double Science and a minimum of a grade 6 in a Higher Tier paper in both Chemistry and Mathematics at GCSE. Studying another Science or Mathematics at A-Level is highly recommended alongside Biology.

BTEC National in Business

Description of Course:

The BTEC course in Business is a broad-based qualification that provides the opportunity for you to explore the world of business in a highly engaging and practical way. By adopting an investigative approach, you develop a range of skills while discovering the problems and opportunities faced by businesses.

The course encourages you to develop an understanding of how business works in the real world and you will discover the problems and opportunities faced by local, national and international businesses. Research will include the study of some well-known businesses including Tesco, Marks and Spencer, and Coca Cola.

Assessment:

You will complete an external examination, a set task and two coursework units during the course:

- Exploring Business (coursework)
- Developing a Marketing Campaign (set task)
- Personal and Business Finance (examination 2 hours)
- One Optional Unit (coursework)

Over the two years of the course you will research a number of areas of business including:

- Exploring Business Success
- Marketing Plans
- Business Finance and Control
- Recruitment and Selection in Business
- Business Planning and Management
- Investigating Customer Service

You will use a range of ICT applications during the completion of the course for both research purposes and the completion of your project work

Why study at Weatherhead?

Students who take this course enjoy the teaching style and like the concept of completing project work and research tasks using computers. Students attain excellent results within the department and every year many go on to study a related subject in Business at degree level. In 2018, students progressed to related degree courses at various universities including Liverpool, Bangor and Manchester.

Course requirements:

You must have achieved 5 GCSEs including a grade 4 in English Language and Mathematics in order to study Business at this level.

A-level Chemistry

Description of Course:

Chemistry is taught at A-level following the AQA specification. This course is structured to develop your hands-on practical and data analysis skills through regular practical lessons, and to look more closely at topics introduced at GCSE, extending your knowledge and introducing new concepts, enabling you to appreciate the relevance of Chemistry beyond the laboratory and to develop a life-long love of Chemistry. Achieving an A-level in Chemistry shows you have the ability to work hard and think clearly and logically.

The content of the course covers the three main areas of Chemistry (Inorganic, Organic and Physical). For you to succeed, you will have to show ability in each of the three areas. Practical skills are essential to the course and will be integral to examinations (at least 15% of the marks will require practical skills).

An A-level in Chemistry will allow you to access careers in medicine and is particularly of value if you wish to develop a career in Pharmaceutical, Agrochemical or Petrochemical industries, or with manufacturers of detergents, paints, dyes, cosmetics, textiles, perfumes and fragrances. Chemistry is a highly regarded A-level (and degree) for many other employers, for example, Government, Journalism, Museums, Accountancy, Teaching and the Legal professions.

Assessment:

Three 2 hour papers

Paper 1: Physical and Inorganic Chemistry topics, with relevant practical skills (105 marks of short & long questions, 35% of A Level).

Paper 2: Physical and Organic Chemistry topics, with relevant practical skills (105 marks of short & long questions, 35% of A Level).

Paper 3: Any content, any practical skills (90 marks, 30% of A-level).

Why study at Weatherhead?

You will be taught by enthusiastic and experienced staff who are passionate about Chemistry and will work with you to ensure you achieve your best. Chemistry is a fascinating but demanding course, requiring a high level of commitment and good mathematical skills.

Course requirements:

You will need at least a Higher Tier grade 6 in GCSE Chemistry or Higher Tier 66 in Double Science and a 6 in Mathematics at GCSE to take Chemistry at AS/A2 level. Studying another science (Biology or Physics) or Mathematics at A-level alongside Chemistry is highly recommended.

NCFE CACHE Technical Level 3 Diploma in Childcare and Education

Description of Course:

The CACHE Level 3 Technical Diploma in Childcare and Education (Early Years Educator) offers a fantastic opportunity to students looking for clear and direct routes into either higher education or employment within the field of Early Years. It enables students to gain the knowledge and experience which will allow them to work with children from birth to 5 years. Successful students may either enter the workforce as Early Years Educators or access Higher Education to complete degrees leading to employment as primary teachers and social workers.

Assessment:

The course is designed to be assessed at three stages – we would expect all students to complete all 3 stages. Award and certificate levels are completed in Year 12; the Diploma units in Year 13. You must successfully pass the Certificate level for entry into Year 13.

ALL units, both internal and external, must be passed in order to achieve the overall qualification

Award level = Units 1 & 2.

Certificate level = Units 1, 2, 3, 4, 5, 6, 7 & an external assessment

The Diploma meets the criteria for Early Years Educators required by the National College for Teaching and Leadership (NCTL) as directed by government.

This is a level 3 qualification is for anyone wishing to work with children, parents and other childcare professionals. The professional modular course gives you the opportunity to combine real life work settings with the theory of child development. It is a 2 year course.

Diploma level = Units 1, 2, 3, 4, 5, 6, 7, 9, 10, 11, 12, 13, 14, 16 and 2 external assessments

- Internal Unit assessment is internally set and marked grades D-A*
- External controlled assessment is set in the May of Year 12 and again in Year 13 – this assessment is set and marked by NCFE CACHE

You must complete and pass 125 days placement across the age range 0-7 years. Placement is arranged by the department and assessment of your practical skills is conducted by the tutors.

Why study at Weatherhead?

Weatherhead has an excellent reputation within the locality for ensuring our Early Years students are recognised as practitioners of the highest quality. Our students are extremely successful in either achieving direct employment within the local workforce or successfully transferring to university to study at degree level.

Course requirements:

Entrance onto the course requires 5 GCSEs at grades 5-9, one of which must be English Language or Literature and a functional skill level 2 or above/ GCSE Mathematics, formal interview and you must also complete a successful DBS check. You will spend two days each week in work placement and three days in school. The work placement is a compulsory part of the course and all students need to be fully committed to this aspect. For placement you will need dark coloured trousers and flat black shoes. You will be provided with a course polo shirt.

A-level Computer Science

Description of Course:

Computer Science is a practical subject where students can apply the academic principles learned in the classroom to real-world systems. It is an intensely creative subject that combines invention and excitement, and can look at the natural world through a digital prism. The aims of this qualification are to enable students to:

- Think creatively, innovatively, analytically, logically and critically.
- Apply skills in and an understanding of computing (including programming) in a range of contexts to solve problems.
- See relationships between different aspects of the subject.
- Be aware of emerging technologies and appreciate their potential impact on society.

- Delve into producing graphical user interfaces and object-orientated programming solutions. Through the creation of a Programming Project, students will have the opportunity to display their skills by creating a substantial piece of software using modern design methods.

The Computer Science qualification provides students with all the skills enabling progress to:

- Computer Science related courses at Degree level. Possible Degree Courses include Computing, Computer Science, Computer Forensics, Internet Computing, Computer and Video Games, Computer Games Technology and Web Computing.
- Employment.
- L4 Advanced Apprenticeships.

Assessment:

The A-level Computer Science course consists of three components:

1. Computer Systems (written exam - 40% of final grade)
2. Algorithms and Programming (written exam - 40% of final grade)
3. Programming Project (coursework - 20% of final grade)

Why study at Weatherhead?

The ICT, Computing and Business Department are a high achieving and successful department. We believe that every student should be fully prepared to function in the ever developing digital world. The Computer Science course allows students to develop their problem solving and analytical skills in a supportive environment where students gain excellent results.

Course requirements:

You must have achieved 5 GCSEs including a grade 6 in Mathematics in order to study Computer Science at this level.

A-level Dance

Description of Course:

This course provides candidates with the opportunity to develop skills and extend and apply knowledge gained at GCSE. Choreography is shifted towards a solo dance, which is performed in the style of a studied choreographer. The second choreography task is to create a group dance which is based upon three possible exam questions set by AQA. The final practical task is to perform as part of a Quartet.

Assessment:

Component 1: Performance & Choreography

1. Solo choreography linked to a practitioner (2-3 minutes) 20 marks

Students must develop and apply the knowledge, understanding & skills required to perform as a soloist in the style of a chosen practitioner from a chosen area of study.

2. Performance in a quartet (2-3 minutes) 20 marks

Students will learn to perform as part of a quartet. The dance can be in any style or genre. Through this piece students should demonstrate their spatial awareness, timing, musicality, focus, projection and sensitivity towards fellow performers.

Performance, analysis and choreography skills will be developed in relation to areas of study and chosen choreographer. Students will continue to receive instruction on technique and the safe practice of the dancer. Students will make an analytical study of two set works and two areas of study. Students will focus upon the historical, political, cultural, social and artistic context of work created.

3. Group choreography (3-4 minutes) 40 marks

Students must learn how to create an original piece of group choreography. Students need to demonstrate they can translate their dance idea into choreography by developing and applying their practical knowledge and understanding of choreographic process. This will include the use of research processes, experimentation through studio and non-studio investigation and finally the rehearsal process.

Component 2: Critical Engagement

Candidates will develop knowledge and understanding of two specific areas of study. The compulsory area '**Rambert Dance Company**' and the optional area of study '**The independent contemporary dance scene in Britain 2000 – current day**'. The two set works which will be studied in detail are '**Rooster**' (Christopher Bruce, 1992) and '**Sutra**' (Sidi Larbi Cherkaoui, 2008). Students will sit a 2 hour and 30 minutes written paper at the end of Year 13 worth 100 marks.

Why study at Weatherhead?

We offer opportunities to work with experienced Dance teachers, complete NATD Contemporary Dance exams, work with professional dancers and dance companies. You are encouraged to take part in assisting Dance lessons and clubs to develop your experience and share the skills you have acquired. We also attend trips to see professional works when possible.

Course requirements:

You must have achieved at least a grade 4/5 in GCSE Dance. You will be studying the 'History of Dance' and must have an interest in the development of the Dance Scene. You must be prepared to rehearse at lunch times & after school to refine your work. You must have a proficient level of dance experience and ability to succeed.

A-level Drama and Theatre

Description of Course:

The course is for you if you enjoy performing, directing and designing for the theatre, attending theatre visits and writing reviews, reading, studying and performing plays and creating devised and scripted performance pieces as a member of a group.

The course builds upon work that you have studied at GCSE and aims to develop an interest and appreciation of drama and theatre through experience as an audience member, watching live theatre and writing critical reviews, developing dramatic and theatrical skills for performance, practical study of dramatic texts. You will be expected to visit a wide range of theatre productions, and also work with others to create performances for an audience.

Assessment:

Component 1: Drama and Theatre (Written Paper) – 40%

Section A: Study of Set Text 1: Drama through the Ages

Section B: Study of Set Text 2: 20th and 21st Century Drama

Section C: Live Theatre Production

Component 2: Creating Original Drama (Practical Coursework) - 30%

Students prepare, rehearse and perform a final devised performance in a group and produce an individual working notebook.

Component 3: Making Theatre (Practical Coursework) - 30%

Students practically explore and interpret three scripted extracts, from different plays and produce a written Reflective Report.

Why study at Weatherhead?

At Weatherhead, we believe in developing the skills of our students through practical exploratory workshops and we also use professional actors, to extend our students. We have excellent lighting, sound and staging facilities in our Theatre, as well as two Drama Studios. Students are also encouraged to contribute to our extra-curricular activities, either as performers or leaders/directors. The subject particularly complements English Literature, Media Studies, Film, Art, Music, Dance, and History A-levels but you can include it in any combination of subjects.

Course requirements:

It is important to have achieved a grade 4/5 in GCSE Drama as the A-level course builds upon the GCSE course. A knowledge and experience of acting/theatre is essential.

As the course is predominantly based upon play texts and written work, you should have at least Grade 4 or 5 in English Language and English Literature.

A-level Design and Technology: Product Design

Description of Course:

During Year 12 you will study materials and their application, classification of materials, methods for investigating and testing materials, processes, adhesives and fixings, jigs, finishes, modern industrial and commercial practices, Product design and development, health & safety. In addition, you will be involved in a series of design and manufacture projects and focused practical tasks that allow skills to be acquired in preparation for Year 13.

During Year 13 you will continue to expand your theoretical knowledge and study all of the theoretical topics in more depth. Furthermore, you will learn about design movements, designers and their work, technological developments, Computer-Aided Design and Computer-Aided Manufacture, environmental issues and national and international standards in product design. In addition, you will embark on a single design and make project whereby you choose your own context and write a brief. This design journey demands a creative approach that shows innovation.

Assessment (during Year 13):

Paper 1: Technical Principles- a written examination 2.5 hours duration which is worth 120 marks (30% of A-level).

Paper 2: Designing and Making Principles- a written examination 1.5 hours duration which is worth 80 marks (20% of A-level).

N.B. There is a mathematical content which is addressed within both examinations and is worth 15% (GCSE level)

Non-exam assessment: Substantial design & make project which is worth 100 marks (50% of A-level).

Why study at Weatherhead?

This creative and thought provoking course will give you the practical skills and theoretical knowledge to succeed in a number of careers within the creative industries. You will be able to gain a real understanding of what it means to be a designer. Furthermore, you will acquire knowledge and skills that are sought by higher education and employers.

Course requirements:

GCSE Product Design and Mathematics 4+.

A-level English Language

Description of Course:

The engaging and up-to-date course content of the new specification reflects contemporary language study. Students will work with exciting text and data-based sources of language and study language in its various forms and contexts. There are a variety of assessment styles: data analysis, discursive essays, directed writing, original writing and research-based investigative writing.

Students will develop a wide range of skills including critical reading, data analysis, evaluation and the ability to develop and sustain arguments which are invaluable for both further study and future employment.

There is also the opportunity to produce an independent, extended essay (NEA-Non examined assessment) totalling 20% of the final grade.

Assessment:

Paper 1: Language, the Individual and Society – 2 hours, 30 minutes - 40% / 100 Marks
(students will study textual variations and representation, as well as Child Language Development).

Paper 2: Language Diversity and Change – 2 hours, 30 minutes - 40% / 100 Marks
(students will study language diversity and change, sociolinguistic topics, discourses and writing skills).

NEA Non-examined assessment – 3500 words - 20% / 100 Marks
(students will carry out their own language investigation and produce a piece of original writing and reflective commentary).

Why study at Weatherhead?

English Language is a popular and successful A-level subject at Weatherhead; we have a dedicated team of specialist Language teachers who will support you throughout the course. We have our own subject blog, as well as a bank of downloadable resources available online to assist with further learning and wider reading. English Language is an exciting, diverse, interesting subject; we strive for the best results and we achieve them.

Course requirements:

A 5 in English Language.

A-level English Literature

Description of Course:

The English Literature course at Weatherhead allows students to read and study literature through the lens of genre and theory, encouraging the independent study of texts within a shared context. Students are required to include a range of wider reading, which extends students' experience and appreciation of literature. There is clear progression from GCSE and this course allows students to build on the skills and knowledge already gained. Students will have the opportunity to study a range of texts including 'Othello', a range of poetry through the ages, 'The Great Gatsby' and a selection of texts based on the First World War.

There are a variety of assessment styles: passage-based questions, unseen material, single and multiple text questions and open and closed book approaches. These assessment styles allow students to develop a wide range of skills, such as the ability to read critically, analyse, evaluate and undertake independent research which are valuable for both further study and future employment. There is also the opportunity to complete an extended NEA (Non-Examined Assessment) totalling 20% of the final grade and students have the freedom to explore a range of texts independently.

Assessment:

Paper 1: (3 hours – open book for Anthology and The Great Gatsby)

Othello, Unseen Poetry and a comparison of two poems from the Anthology and The Great Gatsby.

Paper 2: Option 2A, Option 2: (2 hours, 30 minutes – open book)

Journey's End, analysis of unseen extract, The First Casualty and The Oxford Book of War Poetry.

NEA Non-exam assessment 2500 words

students will write a comparative critical study of The Yellow Wallpaper and a second text from a suggested list.

Why study at Weatherhead?

English Literature is a popular and successful A-level subject at Weatherhead; we have a dedicated team of specialist Literature teachers who will support you throughout the course. We have our own subject blog, as well as a bank of downloadable resources available online to assist with further learning and wider reading. We strive for the best results and we achieve them.

Course requirements:

A 5 in Language and a 6 in Literature.

Extended Project Qualification (EPQ)

Description of Course:

The Extended Project Qualification (EPQ) is a standalone qualification designed to extend and develop skills in independent research and project management. It provides an opportunity for students to extend their abilities beyond the A-level syllabus and prepare for university or their future career. It can also be used to earn extra UCAS points. The EPQ allows you to embark on a largely self-directed project and in doing so you will:

- Become a more critical, reflective and independent learner.
- Develop and apply decision-making and problem-solving skills.

- Increase your skills in planning, research, analysis, synthesis, evaluation and presentation.
- Learn to apply new technologies confidently.
- Demonstrate creativity, initiative and independence.

The EPQ requires students to carry out research on a topic that they have chosen and which is not covered by their other qualifications. They then use this research to produce a written report and, in the case of practical projects, an artefact or a production. A student can take inspiration from something studied in class or something completely unrelated to their studies.

Assessment:

All students follow the same basic process and have to supply the following evidence for assessment:

- Project product in the form of a research report, production or artefact (a written report must accompany a production or artefact).
- Completed Log Book.
- Oral presentation of findings to a small audience.

Why study at Weatherhead?

Our EPQ course develops and provides evidence of the skills universities are looking for:

- Experience of in-depth study in specialised topics, e.g. medical research, politics or astronomy.
- Confidence to work independently and creatively.
- Practice in essay writing and independent research.

Course requirements:

You can choose either to write a long research report or to create a product, such as film or display. If you choose to write a research report, it could take the form of an academic essay, research report of an investigation, exploration of a hypothesis, or academic report.

If you choose to make something, you will still need to supply a shorter research report. The approximate length of reports must be:

- Research report – 5000 words.
- Supplementary research report – 1000 words (min).

Reports should be long enough to explore the relevant issues and use appropriate terminology, style and form of writing. Each one is likely to contain:

- References to a range of information sources.
- Historical literature or some other background research.
- Details of the design, knowledge, understanding and skills used.
- A conclusion, including an evaluation of the outcomes of the Project.

A-level Film Studies

Description of Course:

The course is split into three components and is designed to encourage you to watch, engage critically with and explore a wide range of film; to develop and sustain confident, personal responses to film via textual analysis; and to enjoy a variety of critically acclaimed films across the major genres.

Component 1 (Varieties of film and film making)

You will have three sections to focus on and study six full length feature films.

- **Section A** focuses on 'Varieties of film and film making' and explores different aspects of the film industry through various decades including: Hollywood 1930-1990, which is a comparative study between the Classical Hollywood period (1930-1960) the New Hollywood period (1961-1990).
- **Section B** - American film since 2005 focusing on both mainstream film and contemporary independent film.
- **Section C** looks at British film since 1995 and again involves the study of two texts.

Throughout this component you will analyse: the key elements of film form, the contexts of the films, the meanings of the films and responses to them and the concepts of spectatorship, narrative and ideology.

Assessment:

Component 1: Varieties of film and film making - Written examination: 2½ hours 35% of qualification.

Component 2: Global film making perspectives - Written examination: 2½ hours 35% of qualification.

Component 3: Coursework worth 30%

Component 2 (Global film making perspectives)

This is split into four sections focusing on Global film making perspectives and involves the study of a further 5 feature length films.

- **Section A** looks at Global film requiring reference to two global films: one European and one produced outside Europe whereas
- **Section B** focuses on the Documentary genre.
- **Sections C & D** explore cinema history through a look at the Silent cinema era and Experimental Film from 1960-2000. This component will cover the various aspects of film: the key elements of film form, the contexts of the films, the meanings of the films and responses to them, the concept of narrative, Auteurship, critical debates and filmmakers' theories.

Component 3 (Coursework)

This will provide you with the opportunity to demonstrate your knowledge, understanding and skills of short film through: the production of either a short film (4-5 minutes) or a screenplay for a short film (1600-1800 words) plus a digitally photographed storyboard of a key section from the screenplay and an evaluative analysis of the work produced.

Why study at Weatherhead?

Film Studies is a well-established, academic subject, supported by the British Film Institute. The department consists of a team of Media and Film specialists and has a long history of outstanding results.

Course requirements:

The minimum requirement for this course is grade 4/5 in either English Language or English Literature and a genuine interest in film.

A-level Fine Art

Description of Course:

The first Phase of this course is focussed on building the required skills for the 2 assessed units at the end of Year 13. A foundation style programme developing essential artistic skills begins in September of Year 12 and runs until February half term. In this phase students will refine drawing/painting and 3D skills as well as learning new techniques. The coursework element and first component of the A-level begins after February half term, which is worth 60% of the overall marks.

This is called the Personal Investigation which includes a practical portfolio of work showing the learners response to a starting point as well as a written, related study which supports the practical work. The second component is the externally set task which is worth 40% of the total marks. This is a range of themes set by the exam board and issued on 1st February. Learners are invited to respond to one starting point from the paper and complete a range of preparatory work as well as a 15 hour timed piece.

Assessment:

- Students are given weekly target sheets as well as half termly assessments.
- Both the personal investigation and externally set task are assessed by teaching staff internally and moderated externally.

Why study at Weatherhead?

- Results are consistently high in the department.
- Excellent studios and facilities.
- Experienced staff with excellent subject knowledge.
- Access to work in studios in free lessons.
- European trip to inspire practical work.

Course requirements:

- A GCSE in Fine Art or Textiles at Grade 4.
- Enthusiasm for the subject and a commitment to spend the required time developing and refining skills.
- Good drawing skills are very important to succeed.
- An interest in learning from other Artists and Designers.
- A willingness to try new ideas and experiment.

A-level Geography (AQA)

Description of Course:

A-level Geography will cover both the physical and human environments and the complex interaction of processes that shape our world. It will also, importantly, show the applied side of the subject; how human intervention affects the environment and how people adapt and mitigate the effects of processes on their environment. There is plenty of room for discussion and extended research which will help you become an independent thinker and learner. Geography A-level is highly regarded by both universities and employers and is often seen as the link between science and the humanities.

Physical Geography Topics

- Coastal systems and landscapes focuses on landscapes developed by the interaction of winds, waves, currents and terrestrial and marine sediments.
- Hazards focuses on the lithosphere and the atmosphere, which presents natural hazards to human populations, often in dramatic and sometimes catastrophic fashion.
- Water and Carbon Cycles focuses on the major stores of water and carbon at or near the Earth's surface and

the relationships associated with them. These are major elements in the natural environment and understanding them is fundamental to many aspects of physical geography.

Human Geography Topics

- Global Systems and Global Governance focuses on globalisation – the economic, political and social changes associated with technology and globalisation.
- Changing Places focuses on people's engagement with places, their experience of them and the qualities which are fundamentally important to our lives.
- Contemporary Urban Environments explores the relationships between key aspects of physical geography and the issues surrounding increase in cities around the globe. Sustainability for future urban dwellers is a significant theme.

Fieldwork

All students are required to undertake fieldwork in relation to both physical and human geography. Students must undertake four days of fieldwork during their A-level course.

Assessment:

- 1 Physical Geography Exam worth 40% of your A-level.
- 1 Human Geography exam worth 40% of your A-level.
- 1 Geographical Investigation (3000 – 4000 words individual investigation) worth 20% of your A-level.

Why study at Weatherhead?

The Geography department at Weatherhead is a successful team consistently achieving results well above the national average. We are a highly motivated and dynamic team who believe in getting the best from every student. Many of our students have gone on to study Geography, or a Geography related degree at university.

Course requirements:

You must have achieved at least a grade 5 in GCSE Geography, Maths and Science although grade 6 or higher is advisable. You must have achieved grade 5 on all GCSE Geography units. At least a grade 6 in English is advisable.

BTEC Level 3 National Diploma in Health and Social Care (Double)

Description of Course:

The BTEC National Diploma offers a new and exciting opportunity for you. This 2 year Diploma has been designed to support your progression towards higher education. Employers and professional bodies have been involved in order to confirm that the content is also appropriate for those interested in working in the HSC sector.

You will have the opportunity to develop your:

- Ability to learn independently.
- Ability to research actively and methodically.
- Ability to give presentations and be active group members.
- Effective writing skills.
- Analytical skills.

Assessment:

Learners taking this qualification will study six mandatory units:

- Human Lifespan Development. (1 hour 30 minutes).
- Working in Health and Social Care. (1 hour 30 minutes).
- Meeting Individual Care and Support Needs.
- Principles of Safe Practice in Health and Social Care.
- Enquiries into Current Research in Health and Social Care.
- Promoting Public Health.

You will also study two optional units that cover the biological or sociological topics relevant to health and social care. Assessment will be a combination of external and internal assessment.

Why study at Weatherhead?

Health and Social Care is a very popular course, at Weatherhead, which has supported students as they progress to higher education. Nurses, midwives, social workers, youth workers, occupational therapists, health and well-being specialists, psychology and criminology are some of the subject routes of our students completing HSC courses in 2018.

Course requirements:

You will need 5 GCSEs at grade 5 or above.

BTEC Level 3 National Extended Certificate in Health and Social Care (Single)

Description of Course:

This qualification offers a fantastic opportunity to students looking for clear and direct routes into either higher education or employment within the field of health and social care. Nurses, midwives, social workers, youth workers, occupational therapists, health and well-being specialists, psychology and criminology are some of the destination routes of our students completing courses in August 2018.

Taken alongside other A-level or BTEC qualifications, you will be working on areas employers and universities have highlighted as crucial to the health and social care workforce. Team work, good communication skills, independent learning and the ability to research are just some of the methods of learning you will experience on this programme.

Assessment:

In total – 4 units of study are completed.

1. units are mandatory;

You will complete an external examination/assessment in the following units:

- **Unit 1** - Human Lifespan Development. (1 hour 30 minutes).
- **Unit 2** - Working in Health and Social Care. (1 hour 30 minutes).

You will complete internal assessments for the following units:

- **Unit 5** - Meeting individual care and support needs.
- 1 unit will be chosen from an optional list – still to be decided.

Why study at Weatherhead?

You will be taught by knowledgeable and enthusiastic staff who will work with you to ensure you achieve your best. Our results over the last 5 years are proof that students do achieve and progress onto university courses both locally across the UK.

Course requirements:

You will need a minimum of 5 GCSEs at 5 or above.

A-level History

Description of Course:

This linear History course consists of three units which collectively cover themes from British, Russian and world history.

- The British unit focuses on the fascinating period of the Wars of the Roses from 1450-1499. It delves into the origins of the conflict and the feud between the Houses of Lancaster and York.
- The Russian History unit covers the turbulence of the Tsarist and Communist era from 1855-1964, which saw the rise of Lenin and the Bolsheviks and the creation of the USSR.
- The third aspect to the A-level is a coursework unit in which students investigate a significant issue from the twentieth century. This year the students will choose from racial segregation in South Africa (1881-1994) or the development of anti-Semitism in Prussia/Germany (1848-1945).

Assessment:

Assessment 1: Tsarist and Communist Russia 1855-1964 – one 2 ½ hour exam at the end of Year 13 (40%).

Assessment 2: The Wars of the Roses 1450-1499 – one 2 ½ hour exam at the end of Year 13 (40%).

Assessment 3: Historical investigation – a 3 500 word essay- internally marked, externally moderated (20%).

Why study at Weatherhead?

Studying History at Weatherhead has always been a popular option for students. This is partly due to the teaching, which is genuinely engaging, partly due to the school's excellent facilities but perhaps mostly because our students tend to share our belief that 'the study of History is the beginning of wisdom' - Jean Bodin, French economics (1530-1596).

Studying A-level History at Weatherhead is not only genuinely interesting but also develops vital skills. You would be amazed at the number of careers that are supported by a History qualification: journalism, law, politics, broadcasting, management, museum work, teaching, archaeology, to name just a few. Employers really value individuals who have the skills to research, analyse and communicate information effectively, and these are skills you will get from studying History.

Course requirements:

Prospective students should have at least a grade 5 in both examination units of GCSE History, although a grade 6 or higher is advisable. At least a grade 6 in English is advisable.

We ask that students have undertaken some prior reading around the subject. There are websites to help with this. These include Alpha History, the Historical Association, History Learning Site, the National Archives and SparkNotes.

BTEC National in Information Technology

Description of Course:

The Information Technology course is a 'must-have' qualification for students. Highly motivating, it develops the knowledge and skills you need to be a competent and informed IT user and practitioner in the 21st Century. The course complements many other subject combinations of study at Sixth Form level.

The aim of the course is to produce discerning Information Technology users who can select and use appropriate tools and computer applications to:

- Carry out investigations
- Capture and handle data

- Make decisions
- Present and communicate information
- Design solutions to business problems

Over the two years of the course you will research a number of areas of Information Technology including:

- Website Design
- Management Information Systems
- Database and Spreadsheet Modelling
- The use of Social Media and Communication
- Data Modelling and Analysis

Assessment:

You will complete an external examination, a set task and two coursework units including:

- Using Social Media in Business (coursework).
- Creating Systems to Manage Information (set task).
- Information Technology Systems (examination 2 hours).
- One optional unit in either Website Development OR Data Modelling (coursework).

Why study at Weatherhead?

Students who take the Information Technology course enjoy the teaching style which includes individual research tasks and the completion of project work. The students within the department attain excellent results and many go on to study a related subject in Information Technology or Computing at degree level. Students have recently gained places at various universities including Liverpool John Moores, Edge Hill and Manchester Metropolitan Universities.

Course requirements:

You must have achieved 5 GCSEs including a Grade 4 in English Language and Mathematics in order to study Information Technology at this level.

A-level Mathematics

Description of Course

Do you like a challenge? Do you excel at algebra and trigonometry? Do you want an A-level that is highly regarded by universities and employers? If so then Mathematics A-level is for you!

Studying Mathematics not only takes you deeper in to mathematical concepts and extends your knowledge of mathematics but also teaches you how to analyse and solve problems, reason logically, critically analyse and communicate concisely. All these skills are highly sought after by universities and employers. A shortage of highly numerate candidates in the job market means employers also pay a premium for the problem solving and number crunching skills of A-level mathematicians. You may be surprised by which careers value A-level Mathematics highly.

Visit www.mathscareers.org.uk for more information.

Assessment:

External examinations take place in the summer term of Year 13 and consist of 3 x 2 hour papers:

- Paper 1 - Pure Mathematics (testing any content)
- Paper 2 - Pure Mathematics (testing any content)
- Paper 3 - Statistics and Mechanics

Each paper counts equally towards the final grade.

Why study at Weatherhead?

You will be taught by a team of specialist teachers who continually strive to provide innovative lessons and top class support to all students. Our group sizes are small and you will have the opportunity to attend daily clinics for additional intervention or help with homework. We use E-Learning resources extensively to supplement lesson resources, provide online textbooks for you to access at home and subscribe to the 'Integral Maths' online toolkit which offers a multitude of walkthroughs and practice questions.

During the two year course we will cover three main areas of mathematics:

- Pure content is the foundation of mathematics and builds upon topics such as algebra, trigonometry, functions and vectors which you will have studied at GCSE.
- Statistics deals with the representation of data/information, how data can be analysed and how we can produce models and predictions using data and probability calculations.
- Mechanics is where we apply mathematics to physical situations involving forces, momentum and kinematics (speed/velocity, distance and time).

The work covered in Mathematics will help you if you also study Biology, Business Studies, Chemistry, Computing, Geography, Physics, PE and Psychology. You may also wish to consider Further Mathematics A-level, especially if you are considering studying for a Mathematics degree or an engineering related subject at University.

Course requirements:

You must have studied higher tier GCSE Mathematics and acquired grades 9-6 to study A-level Mathematics; however, this is a difficult course and we will provide additional support for anyone with a grade 6 at GCSE.

A-level Further Mathematics

Description of Course:

Further Mathematics aims to extend and deepen your understanding of Mathematics. In addition to the A-level Mathematics content you will cover a greater variety of pure topics, including the use of complex numbers, matrices, polar coordinates and differential equations. You will have the opportunity to study topics in more detail/depth and have your first introduction to Decision Mathematics.

The Further Mathematics qualification is a fantastic choice if you plan on entering a mathematics/engineering related career or degree course and will give you a head start in the more advanced techniques and knowledge required for further study. Further Mathematics will also supplement mathematics content in other A-level subjects.

Assessment:

External examinations take place in the summer term of Year 13 and consist of 4 x 1.5 hour papers:

- Paper 1 - Core Pure Mathematics (testing any content)
- Paper 2 - Core Pure Mathematics (testing any content)
- Paper 3 - Decision Mathematics 1
- Paper 4 - Decision Mathematics 2

Each paper counts equally towards the final grade.

Why study at Weatherhead?

Further Mathematics is a popular and very successful subject at Weatherhead. We have a dedicated team of specialist Further Mathematics teachers on hand to support you through the course. Further Mathematics at Weatherhead is an exciting subject where we strive for the very best results and achieve them! We use E-Learning resources extensively to supplement lesson resources, provide online textbooks for you to access at home and subscribe to the 'Integral Maths' online toolkit which offers a multitude of walkthroughs and practice questions.

Course requirements:

You must be studying A-level Mathematics alongside this course. You must have studied higher tier GCSE Mathematics and acquired grades 9-6; however, this is a difficult course and we recommend grades 9-7 at GCSE to study Further Mathematics.

BTEC National in Creative Digital Media Production

Description of Course:

The BTEC course in Creative Digital Media Production is a broad-based qualification that provides the opportunity for you to explore the varied world of digital Media in a highly engaging and practical way. By adopting both a practical and an investigative approach, you develop a range of skills while discovering the problems and opportunities faced within the industry. The aims of this qualification are to enable students to:

- Analyse a range of Media to explore how meaning, messages and values are constructed in texts.
- Understand the process's required to produce a digital product including finance, logistics and regulations.

- Produce proposals in response to client's ideas to show an understanding of style, audience and purpose.
- See relationships between different aspects of the subject.
- Be aware of emerging technologies and appreciate their potential impact on society.
- Produce a digital Media product displaying a full understanding of the pre-production, production and post production practices required to make a successful product.

You will use a range of Media equipment and ICT applications during the completion of the course for both research purposes and the completion of your project work.

Assessment:

You will complete an external examination, a set task and two coursework units during the course:

- Pre-Production Portfolio (coursework)
- Media Representations (set task) 2 hour examination
- Responding to a Commission (examination) 5 hour supervised assessment
- One Optional Unit (coursework)

Why study at Weatherhead?

Students who take this course enjoy the teaching style and like the concept of completing project work and research tasks using computers. Students attain excellent results within the department and every year many go on to study a related subject in Media at degree level. In 2017, students progressed to related degree courses at various universities including Liverpool, Manchester, Sheffield and Manchester.

Course requirements:

You must have achieved 5 GCSEs including a grade 4 in English Language in order to study Media at this level.

A-level Modern Foreign Language: French and Spanish

Description of Course:

Modern Foreign Languages (MFL) appeals to those who enjoy communicating, have a keen interest in languages, and enjoy learning about other cultures. Knowledge of a second language is an advantage in any field and can open up many career opportunities.

At Weatherhead we offer MFL A-level courses in French and Spanish. At both AS and A2 level we cover a range of interesting projects which will enable you to talk about a wide range of topics. The topics are an extension of some of the topics you study at GCSE.

The course helps you to analyse and use language in all forms and allows you to see the language in real world resources, taken from newspapers, television and the internet. You will learn how to use different registers of language to write in a variety of situations and using advanced structures to achieve a native level of language.

Topics covered at A-level are:

- Social issues and trends
- Artistic culture
- Grammar
- Works: Literary texts and films

Assessment:

Paper 1: Listening, Reading and Writing - 50% of the A-level
2 hours 30 minutes written examination. 100 marks for this paper.

Paper 2: Writing - 20% of the A-level
2 hours written examination. 80 marks for this paper.

Paper 3: Speaking - 30% of the A-level
Oral exam 21-23 minutes (including 5 minutes preparation time). 60 marks in total.

Why study at Weatherhead?

You will be taught by a team of dedicated and enthusiastic teachers with excellent subject knowledge. A variety of teaching and learning methods will be used throughout the course, including; group work, whole class discussions and presentations. You will also have the opportunity to participate in a language immersion trip to France or Spain where you will develop your skills in the language even further.

Course requirements:

You will need at least a grade 6 at GCSE to study A-level languages. Languages combine well with most other subjects.

A-level Modern Foreign Language: German

Description of Course:

Modern Foreign Languages (MFL) appeals to those who enjoy communicating, have a keen interest in languages, and enjoy learning about other cultures. Knowledge of a second language is an advantage in any field and can open up many career opportunities.

At Weatherhead we offer MFL A-level courses in French, German and Spanish. We cover a range of interesting projects which will enable you to talk about a wide range of topics. The topics are an extension of some of the topics you study at GCSE. The course helps you to analyse and use language

in all forms and allows you to see the language in real world resources, taken from newspapers, television and the internet. You will learn how to use different registers of language to write in a variety of situations and using advanced structures to achieve a native level of language.

The core content covered at German A-level is:

- Social issues and trends
- Political and Artistic culture
- Grammar
- Works: Literary texts and films

Assessment:

Paper 1: Listening, Reading and Writing - 50% of the A-level
2 hours 30 minutes written examination. 100 marks for this paper.

What's assessed

- Aspects of German-speaking society
- Artistic culture in the German-speaking world
- Multiculturalism in German-speaking society
- Aspects of political life in German-speaking society
- Grammar

Paper 2: Writing - 20% of the A-level
2 hours written examination. 80 marks for this paper.

- One text and one film or two texts from the list set in the specification
- Grammar

Paper 3: Speaking - 30% of the A-level
Oral exam 21-23 minutes (including 5 minutes preparation time). 60 marks in total.

What's assessed

- Individual research project
- One of four themes (Aspects of German-speaking society or Artistic culture in the German-speaking world or Multiculturalism in German-speaking society or Aspects of political life in German-speaking society)

Why study at Weatherhead?

You will be taught by a dedicated and enthusiastic teacher with excellent subject knowledge. A variety of teaching and learning methods will be used throughout the course, including; group work, whole class discussions and presentations.

Course requirements:

You will need at least a grade 6 at GCSE to study A-level German. German combines well with most other subjects.

A-level Music

Description of Course

Are you a natural performer? Or maybe you enjoy writing your own music? Perhaps you already play your instrument on a regular basis? Do you want an A-level that will prepare you for a performance based course at college or university or a career in Arts Administration?

Assessment:

Appraising music: 40%

You will appraise, develop and demonstrate an in-depth knowledge and understanding of musical elements, musical contexts and musical language. There are three compulsory and optional areas of study:

- Western classical tradition 1650 - 1910 (compulsory).
- Pop music.
- Music for media.

Performance: 35%

You must be able to perform music using one or both of the following ways:

- Instrumental/vocal: as a soloist, and/or as part of an ensemble.
- Production: via music technology.
- You must perform for a minimum of ten minutes.

Can you play to a minimum of Grade 5 standard on your instrument or voice? If the answer is “yes” then this would be an ideal subject for you.

Composition: 25%

The combined duration of the compositions must be a minimum of four and a half minutes.

One must be in response to an externally set brief (Composition 1) and the other a free composition (Composition 2).

You must be able to compose music in one or both of the following formats:

- Instrumental/vocal: produce notated score, written accounts and/or lead sheet by traditional means or by using music software as appropriate.
- Production: generated entirely digitally, by using music software, without notated score but with accompanying annotation.

Why study at Weatherhead?

You will have the opportunity to work with a professional composer and perform in many of the extra-curricular ensembles at Weatherhead. We have excellent facilities and resources, including a wide range of instruments, recording studio, music software and a fantastic theatre for recitals and performances.

Course requirements:

It is important to have achieved a 4/5 grade in GCSE Music as the A-level course builds upon the GCSE course. Knowledge of theory and music notation is essential, as is being able to play to a minimum of Grade 5 standard in your instrument.

BTEC Level 3 National Extended Certificate in Music

Description of Course:

Are you a natural performer? Or maybe you enjoy writing your own music? Perhaps you already play your instrument on a regular basis? Do you want a qualification that will prepare you for a performance based course at college or university or a career in the music industry? Can you play to a minimum of Grade 3 standard on your instrument or voice? If the answer is “yes” then this would be an ideal subject for you.

Everyone taking this qualification will study a variety of mandatory units, which provide an essential introduction to the skills and knowledge required to be successful in music, covering the following topics:

- Ensemble performance techniques
- Professional practice in the music industry
- Creating a music product.

You will choose one option unit. The option units have been designed to support progression to more specialist music courses in higher education and to link with relevant occupational areas such as composition, business, technology and performance. This allows you to choose a specific specialist area in which you wish to develop your skills.

Why study at Weatherhead?

You will have the opportunity to work with a professional composer and perform in many of the extra-curricular ensembles at Weatherhead. We have excellent facilities and resources, including a wide range of instruments, recording studio, music software and a fantastic theatre for recitals and performances.

Course requirements:

Whilst GCSE Music is not a requirement, you will need to have some experience of performing to take this course. This can be on any instrument. Knowledge of theory and music notation is desirable, as is being able to play to a minimum of Grade 3 standard in your instrument.

A-level Photography

Description of Course:

The first Phase of this course is focussed on building the required skills for the 2 assessed units in year 13. A foundation style programme developing essential photographic skills begins in September of Year 12 and runs until February half term. In this phase students will learn technical skills as well as artistic styles for presenting artwork. Students are encouraged to experiment and learn how to use a range of designers and photographers to inspire their own work. The coursework element and first component of the A-level begins after February half term, which is worth 60% of the overall marks.

This is called the Personal Investigation which includes a practical portfolio of work showing the learners response to a starting point as well as a written, related study which supports the practical work. The second component is the externally set task which is worth 40% of the total marks. OCR offers a range of themes which are issued on 1 February. Learners are invited to respond to one starting point from the paper and complete a range of preparatory work as well as a 15 hour timed piece.

Assessment:

- Students are given weekly target sheets as well as half termly assessments.
- Both the personal investigation and externally set task are assessed by teaching staff internally and moderated externally.

Why study at Weatherhead?

- Results are consistently high in the department.
- Excellent studios and facilities.
- Experienced staff with excellent subject knowledge.
- Access to work in studios in free lessons.
- European trip to inspire practical work.

Course requirements:

- A GCSE in Fine Art or Textiles is beneficial.
- Enthusiasm for the subject and a commitment to spend the required time developing and refining skills.
- Creativity and a willingness to experiment is very important to succeed.
- An interest in learning from other Artists and Designers.

A-level Physical Education

Description of Course:

This is a course offering students with a natural interest in sport the chance to gain qualifications which will provide a broad and balanced Physical Education background for entry into higher education and/or employment. The course encourages the development of different methods of enquiry drawn from a wide range of disciplines, with a focal point being on the performer and the performance.

Assessment:

This course is 70% theory and 30% practical.

Paper 1 - Physiological factors affecting performance

- 2 hour written examination
- 30% of total A-level

Paper 2 - Psychological factors affecting performance

- 1 hour written examination
- 20% of total A-level

Paper 3 - Socio-cultural issues in physical activity and sport

- 1 hour written examination
- 20% of total A-level

All theory work is supported with practical examples from a wide range of sports and activities. Students will combine their theoretical knowledge with practical performance. Students must have a genuine interest in sport and must be committed to extra-curricular sporting activities.

Practical Assessment

Students will be required to perform or coach one practical activity from a list of approved activities. This is worth 15% of the total A-level.

- They must also complete an oral assessment which requires them to observe a performance in their chosen activity and identify and justify the major weaknesses in the performance and create a 2-3 month action plan to improve the weakness. This is worth 15% of the total A-level.

Why study at Weatherhead?

- Excellent examination results.
- Many students go on to study Sport and Exercise Science, Sport Development and Physical Education at University.
- Physical Education is a popular and successful A-level subject at Weatherhead. It is delivered by a dedicated team of specialist teachers who are committed to outstanding Teaching and Learning. We strive for the best results and we will support you throughout the course to ensure that we achieve them together.

Course requirements:

You must have achieved at least a grade 5 on both of the examination papers on the GCSE Physical Education course. You must have achieved at least a grade 5 in English, Maths and Science.

A-level Physics

Description of Course

Physics is a fun yet demanding course. You will build upon your GCSE knowledge and learn completely new material. You will study Particles, Quantum Phenomena, Waves, Mechanics, Electricity, Fields and Nuclear Physics, plus an option from Astrophysics, Medical Physics or Turning Points in Physics. You will also carry out practical work to achieve the required competencies.

Assessment:

3 x 2 hour examinations assessing all of the above content, plus practical skills and data analysis.

Paper 1: Year 12 and 13 content (34% of A-level)

Paper 2: Year 12 and 13 content (34% of A-level)

Paper 3: Section A (Practical Skills and Data Analysis) and Section B: Option Topic (32% of A-level)

Why study at Weatherhead?

We provide a caring and supportive environment where you are encouraged to learn at your own pace and develop the independence needed to make progress and achieve your potential.

Course requirements:

You will need at least a grade 6 in Physics or a Higher Tier grade 66 in a Double Science and a minimum of a grade 6 in a Higher Tier paper in Mathematics at GCSE. Studying another Science or Mathematics is recommended alongside Physics.

A-level Psychology

Description of Course:

Psychology is the study of the mind and behaviour. Research in psychology seeks to understand and explain thought, emotion and behaviour. Applications of psychology include; mental health treatment, forensics and other areas affecting health and daily life. The course covers a wide range of topic areas which will provide students with a broad understanding of the subject.

Topics include; social influence, memory, biopsychology, research methods, schizophrenia, forensic and more. Psychology is becoming an increasingly popular and important area of study and is a well-respected subject by universities. This qualification is linear. Linear means that students will sit all the A-level exams at the end of their two-year A-level course.

Assessment:

There are three written exams in Psychology and no coursework. Each exam is 2 hours long and each is worth 33.3% of the A-level grade. Questions will consist of multiple choice, short answer and extended writing questions. Students are assessed on their knowledge, application, evaluation and mathematical skills in all three papers.

Why study at Weatherhead?

Psychology is an extremely popular subject and we are one of the biggest subjects at A-level in terms of the number of students. The Psychology department has excellent subject specialist teachers that are dedicated to the success of the students. Students enjoy their psychology course which is evident from student voice; including the engaging and creative lessons. The department also runs a trip to Liverpool Crown Court and invites lecturers from universities and other speakers to come into school to talk to students about the subject. There are lots of options available for Psychology degree graduates and careers can be followed in the following areas: clinical psychology, educational psychology, criminal psychology, forensic psychology, occupational psychology, police work, social work; teaching, health care, business and many more.

Course requirements:

Prospective students must have achieved a level 5 or higher in English, Maths and Science (including all parts of Science). These requirements are reflected by an increase in mathematical skills being assessed in the psychology examinations.

A-level Religious Studies: Philosophy, Ethics and Religion

Description of Course:

Throughout the two year course students will engage with many philosophical and theological themes. The linear Religious Studies course consists of three components which will cover three topics: Philosophy, Ethics and Religion.

- The **first component** focuses on philosophical themes and influences, stemming back from Ancient Greek thinkers to modern day philosophy. Students will get the opportunity to engage with their own philosophical insights and be prepared to debate topics such as: the existence of God, whether human beings are all material or have a soul and the problem of evil.
- The **second component** focuses on ethical theories and debated ethical topics. Students will study theorists who have adapted views on how we should behave and apply those theories into the ethical issues of euthanasia and business practice. This component will allow students to engage in highly controversial topics and build skills in critical thinking.
- The **third component** is a new element of the OCR Religious Studies course. This topic allows for students to study the relevance of Christianity today and the impact it has on individual lives. Topics range from 'the person of Jesus Christ' to 'death and the afterlife.'

Assessment:

Philosophy of religion (01) 2 hour written paper (33.3% of total A-level)

Religion and ethics (02) 2 hour written paper (33.3% of total A-level)

Developments in religious thoughts (03) 2 hour written paper (33.3% of total A-level)

Why study at Weatherhead?

Studying Religious Studies is increasingly popular at Weatherhead High School. The students get the opportunity to engage with exciting topics and input their own opinions into debatable issues. The course also allows students to grasp with vital abilities, such as essay writing and interpretation skills, needed to gain entry into universities across the country.

The Religious Studies team at Weatherhead are committed to their students. Many students continue their studies in the subject and speak often on how enjoyable and engaging the lessons are throughout their time in Sixth Form.

Course requirements:

Prospective students should have at least 5 GCSEs at grade 5 and above. Students should also have a 4/5 or above grade in English Language and Literature. Completion of Religious Studies at GCSE is desirable but not necessary.

A-level Sociology

Description of Course

Sociology is an immensely challenging and exciting subject. It is a widely recognised and valued academic subject, which will make you think in a critical way about society and will help you develop a lifelong interest in social issues. Sociology is the study of how society is organised and how we experience life. Sociologists try to explain human behaviour but, unlike other scientists, they stress that human behaviour results from the way that people interact and mix with each other.

They are therefore interested in what goes on within social groups, from the smallest, such as the family and peer group, through to large scale institutions such as the government, business corporations and international organisations. As a Sociology student you will study topics such as Religion, Politics, Education, Crime, Deviance and Poverty. You will also learn how to collect data and investigate society. Sociology will help you to make sense of your own identity and experiences in society. It will help you to become a better informed and a more socially aware member of society.

Assessment:

At A-level there are three exams, each account for one third of your A-level. The three exams last two hours and are worth 80 marks each. The exams will assess your knowledge and understanding of the following topics: Education, Research Methods, Sociological Theory, Work, Poverty and Welfare, Crime and Deviance, and Beliefs in Society. The exams consist of a mixture of short answer and extended writing questions.

Why study at Weatherhead?

Sociology is a very popular and successful subject in the school. Students enjoy and value their learning in this subject, with many students going on to study Sociology or a related social science subject at university. Excellent working relationships exist between staff and students and this enhances the learning of students. The department has subject specialist teachers who enjoy teaching the subject and who are dedicated to the success of their students.

Course requirements:

You need to be good at writing essays and so it is important for students to have a grade 4/5 at English Language and at least five 4/5 in other GCSE's. Ideally you should also be inquisitive in your approach to study and in finding out how the subject relates to the present day. Therefore, an interest in social and political issues and in what goes on in society in general is an essential requirement for a Sociology student.

BTEC Level 3 National Extended Certificate in Sport

Description of Course:

This course allows students with a genuine interest in sport, the opportunity to gain a qualification which carries UCAS points and will support their progression to higher education if taken alongside other qualifications or to direct employment in the sports sector.

Students will develop transferable skills through their studies, such as improved communication skills and the ability to work collaboratively, as well as inter-personal skills (adaptability, resilience and self-management).

Assessment:

Unit 1 – Anatomy and Physiology

- Students will acquire knowledge of how the body systems interrelate to allow us to perform a wide variety of sporting activities.
- This unit is assessed via an examination lasting one and half hours.

Unit 2 – Fitness Training and Programming for Health, Sport and Well-Being

- Students will interpret lifestyle factors and health screening data to develop and justify a fitness training programme and nutritional advice for clients.
- This unit is externally assessed. 2 hours 30 minutes.

Unit 3 – Professional Development in the Sports Industry

- Students will explore the knowledge and skills required for different career pathways in the sports industry. They will take part in and reflect on a personal skills audit, career action plan and practical interview assessment activities.
- This unit is assessed internally.

Unit 5 – Application of Fitness Testing

- Students will gain an understanding of the requirements of fitness testing and learn how to safely conduct a range of fitness tests for different components of fitness.
- This unit is internally assessed.

Why study at Weatherhead?

Students who take this course enjoy the teaching style and like the concept of completing coursework, research tasks and examinations. We have a devoted team of sports specialist teachers who will support you throughout the course. We endeavour to attain the best results and give a pathway to university.

Course requirements:

You must have achieved at least a grade 4 in both examination papers on the GCSE Physical Education course. You must have achieved at least a grade 4 in English, Maths and Science.

A-level Textiles

Description of Course:

The first Phase of this course is focussed on building the required skills for the 2 assessed units at the end of Year 13. A foundation style programme developing essential artistic skills begins in September of Year 12 and runs until February half term. In this phase students will refine drawing, printing and Textiles skills as well as learning new techniques.

The coursework element and first component of the A-level begins after February half term, which is worth 60% of the overall marks. This is called the Personal Investigation which includes a practical portfolio of work showing the learners response to a starting point as well as a written, related study which supports the practical work. The second component is the externally set task which is worth 40% of the total marks. This is a range of themes set by the exam board and issued on 1st February. Learners are invited to respond to one starting point from the paper and complete a range of preparatory work as well as a 15 hour timed piece.

Assessment:

- Students are given weekly target sheets as well as half termly assessments.
- Both the personal investigation and externally set task are assessed by teaching staff internally and moderated externally.

Why study at Weatherhead?

- Results are consistently high in the department.
- Excellent studios and facilities.
- Experienced staff with excellent subject knowledge.
- Access to work in studios in free lessons.
- European Trip to inspire practical work.

Course requirements:

- A GCSE in Fine Art or Textiles.
- Enthusiasm for the subject and a commitment to spend the required time developing and refining skills.
- Creativity and an aptitude for the subject are very important to succeed.
- An interest in learning from other Artists and Designers.
- A willingness to try new ideas and experiment.

Notes / Questions



Weatherhead High School,
Breck Road Wallasey, Wirral, CH44 3HS

Telephone: 0151 631 4401

Website: www.weatherheadhigh.co.uk/sixthform

Email: ask6f@weatherheadhigh.co.uk

sixthformapps@weatherheadhigh.co.uk

Twitter: [weatherhead6th](https://twitter.com/weatherhead6th)

Facebook: [weatherheadsixthform](https://www.facebook.com/weatherheadsixthform)